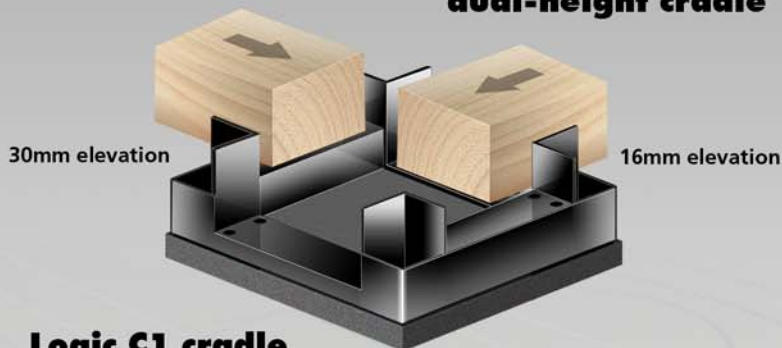


## INNOVATIVE DESIGN

Logic Floor Levelling Systems provide an easy new way of levelling floor battens - solving the problem of uneven sub-floors and varying floor depths with an innovative dual-height cradle design.

### dual-height cradle



### Logic C1 cradle

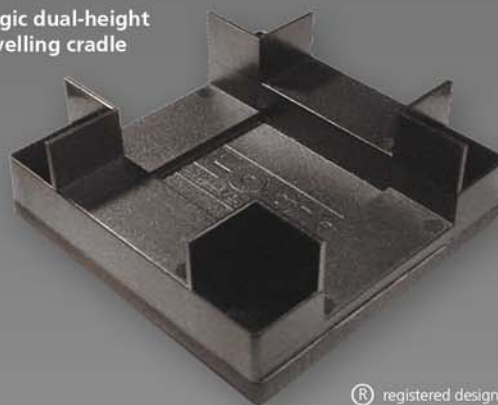
## COST-SAVING & EASY-TO-USE

- Logic cradles save builders time and money by removing the need for highly accurate sub-floors or expensive levelling screeds
- Logic cradles save contractors time and money by making site surveys easier, simplifying materials procurement and significantly reducing installation time
- Variable floor depths: each cradle size can accommodate sub-floor deviations of up to 30mm. Achievable floor depth range from 74mm to 148mm with standard battens
- Logic cradles are available in two types; **Sports cradles** and **Acoustic cradles**, and currently in two sizes:

**Logic C1 cradle** dual height 16/30mm

**Logic C2 cradle** dual height 45/60mm.

Logic dual-height levelling cradle



® registered design

## HIGH QUALITY & DURABILITY

Logic dual-height cradles are injection-moulded from high quality, tough, durable and impact-resistant polypropylene, and have a special resilient pad fixed to the underside: with a choice of **sports** or **acoustic** characteristics depending upon the function required.

Logic's innovative packer design enables fast, effective levelling and glueless installation. Each packer has a locator nib which slots into the cradle to prevent it dislodging under impact.

## TESTED, CERTIFIED & APPROVED

Logic Floor Levelling Systems have been tested and certified to the latest British and European standards. Used in conjunction with leading floor brands Boen and Junckers, Logic Sport cradles achieve the highest level of sports performance. Logic Acoustic cradles fully conform with acoustic standards for impact sound reduction.



## HIGH PERFORMANCE TEST RESULTS

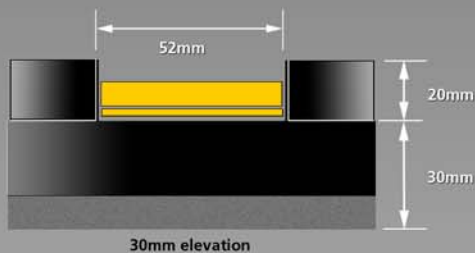
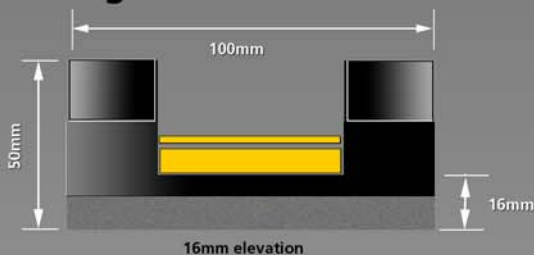
Logic Floor Levelling Systems have been tested for compliance with the latest harmonised European performance standard BS EN 14904: 2006, which is the standard recommended by Sport England. Logic achieved outstanding test results which place the system in the highest category of sports performance - **Area Elastic Floor type A4**.

**CONFORMS TO LATEST EUROPEAN STANDARDS**

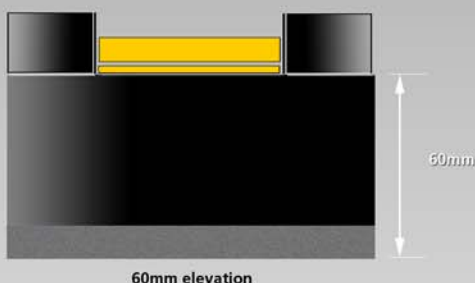
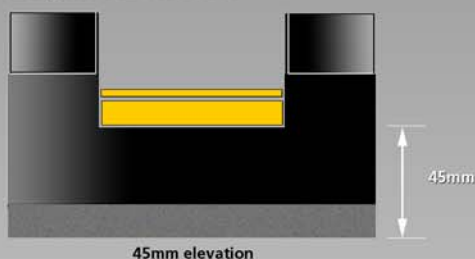
## LOGIC cradles

Dual-height cradle, injection-moulded recycled ABS, base 100 x 100mm, incorporating 10mm resilient foam impact pad (Sport or Acoustic)

### Logic C1 cradle



### Logic C2 cradle



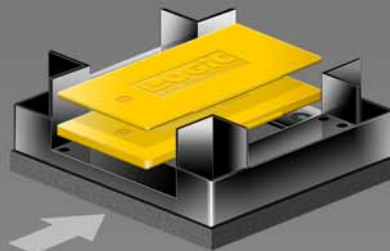
## LOGIC packers

Injection-moulded polypropylene; 2mm and 6mm thicknesses

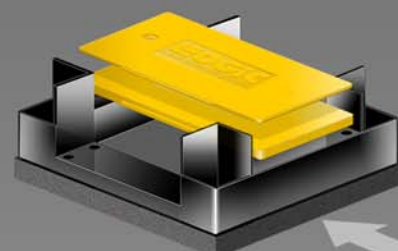


Logic Floor Levelling Systems are suitable for use with structural floorboards (minimum thickness 20mm) and flooring grade sheet materials (such as plywood and chipboard with a minimum thickness of 18mm).

## TECHNICAL DETAILS & SPECIFICATIONS



16mm elevation



30mm elevation

### ● PERFORMANCE TESTS FOR LOGIC SPORTS CRADLES

**BS EN 14904: 2006** this new harmonized European standard has superseded the old British Standard BS 7044 Part 4: 1991, with more demanding performance criteria.

Logic cradles comply with the highest category for Area Elastic floors: Type A4. Detailed test results on request.

	Junckers	Boen Arenaflex
Shock absorption	✓ A4	✓ A4
Friction	✓ A4	✓ A4
Vertical deformation	✓ A4	✓ A4
Basketball rebound	✓ A4	✓ A4



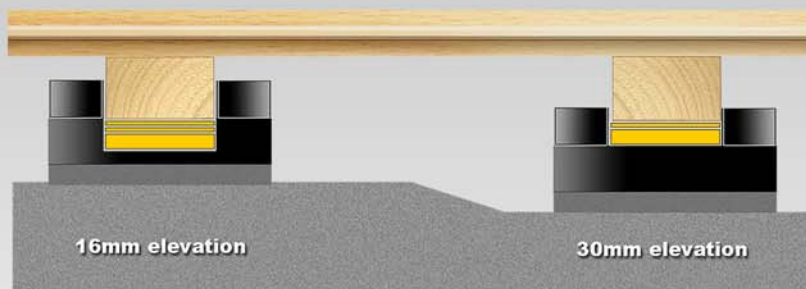
### ● PERFORMANCE TESTS FOR LOGIC ACOUSTIC CRADLES

Logic Floor Levelling Systems contribute significantly to the reduction of airborne and impact sound through party floors. Used with the appropriate floor, wall and ceiling construction, Logic systems comply with the requirements of Document E of Building Regulations.

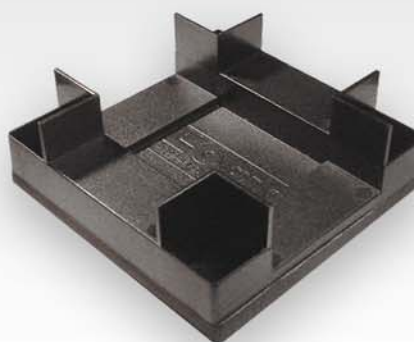
Tests carried out by the Building Research Establishment (BRE) indicate that when installed with 22mm structural floor boards the system achieves an improvement in impact sound insulation on a standard heavyweight floor of 24db (unloaded) and 20db (loaded), calculated in accordance with BS EN ISO 140-8.

### ● BATTEN & CRADLE SETTING OUT DETAILS

Product	Junckers	Arenaflex	Tarkett	T+G chipboard
<b>Batten centres</b>	411mm	367mm	420mm	400mm
<b>Cradle centres</b>				
36mm batten	450mm	450mm	450mm	450mm
48mm batten	600mm	600mm	600mm	600mm



**LOGIC**  
FLOOR LEVELLING SYSTEMS



Logic House  
31 Gibfield Park Avenue  
Gibfield Business Park  
Atherton, Manchester  
M46 0SY

T 01942 881500  
F 01942 881501

email [logic@courcraft.co.uk](mailto:logic@courcraft.co.uk)  
web: [www.courcraft.co.uk](http://www.courcraft.co.uk)