



LOGIC

FLOOR LEVELLING SYSTEMS

LOGIC

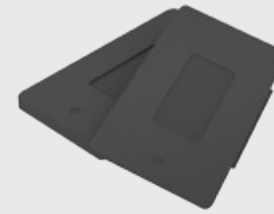
FLOOR LEVELLING SYSTEMS

Logic Floor Levelling Systems provide an easy new way of levelling floor battens – solving the problem of uneven sub-floors and varying floor depths with an innovative duel-height cradle design.

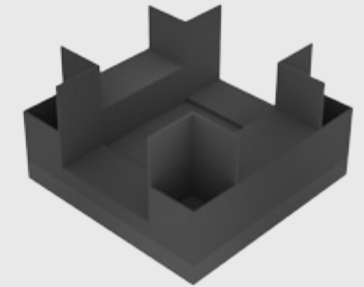
Logic duel-height cradles are injection moulded from high quality, tough, durable and impact-resistant polypropylene and have a special resilient pad fixed

to the underside: with a choice of sports or acoustic characteristics depending upon the function required.

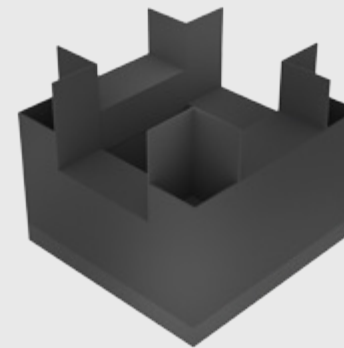
Logic's innovative packer design enables fast, effective levelling and glueless installation. Each packer has a locator nib which slots into the cradle to prevent it dislodging under impact.



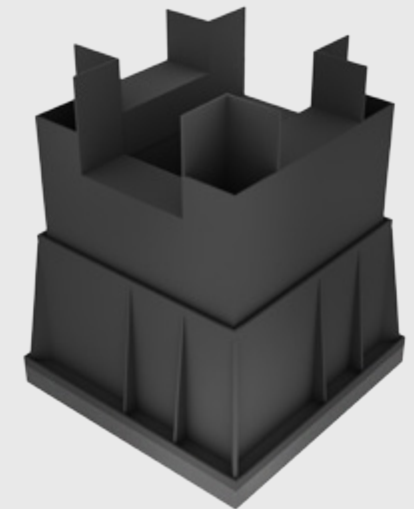
Logic Packers



C1 Cradle



C2 Cradle



Tower Cradle



t. 01942 881500 e. squash@courtcraft.co.uk w. courtcraft.co.uk



TEST CERTIFICATE

This is to certify that the sports surfacing

LogicFloor Levelling System with 22mm Junckers Sylvasport Premium

submitted by:

CourtCraft Ltd

has been tested in accordance with EN14904
and conformed to the following requirements:

Shock Absorption
Friction
Vertical Deformation
Vertical Ball Behaviour
Resistance to a Rolling Load



Alastair Cox
Director



James R Blackburn
Consulting Engineer

Full details of the product tested and the results obtained are detailed in Labosport Report UK.09-0010/B. This certificate should only be issued in conjunction with the test report.

Date of test	23 rd January 2009
--------------	-------------------------------

Unit 3, Heanor Gate Road, Heanor, Derbyshire, England, DE75 7RJ
Tel. +44 (0)1773 765007 Fax. +44 (0)1773 765009
www.labosport.co.uk



4098

Labosport Limited is registered in England Number: 5185905 at 14 Birchview Close, Belper, Derbyshire DE56 1RS

Labosport's schedule of UKAS accredited tests may be viewed on www.UKAS.org.uk (accreditation number 4098)



TESTED, CERTIFIED & APPROVED

Logic Floor Levelling Systems have been tested and certified to the latest **British & European standards**

Logic Floor Levelling Systems have been tested and certified to the latest British & European standards. Used in conjunction with leading floor brands, Boen and Junckers, **Logic** Sport cradles achieve the highest level of sports performance. **Logic** Acoustic cradles fully conform with acoustic standards for impact sound reduction.

Logic Floor Levelling Systems

have been tested for compliance with the latest harmonised European performance standard BS EN 14904: 2006, which is the standard recommended by Sport England. **Logic** achieved outstanding test results which place the system in the highest category of sports performance - **Area Elastic Floor Type A4.**



COST-SAVING & EASY TO USE

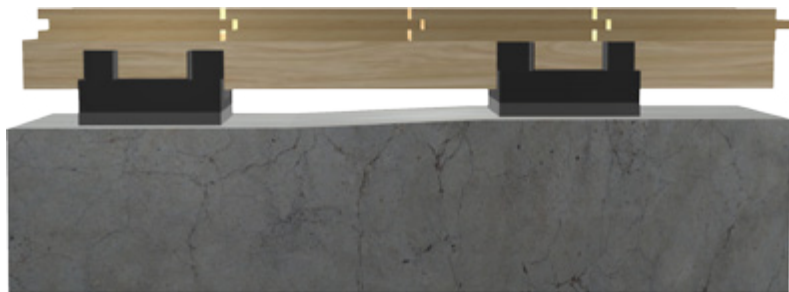
- Logic cradles save builders time and money by removing the need for highly accurate sub-floors or expensive levelling screeds.
- Logic cradles save contractors time and money by making site surveys easier, simplifying materials procurement and significantly reducing installation time.
- Variable floor depths: each cradle size can accommodate

sub-floor deviation of up to 30mm. Achievable floor depth range from 74mm to 148mm with standard battens.

- Logic cradles are available in two types; Sports cradles & Acoustic cradles and currently in two sizes.

Logic C1 cradle – duel height
16/30mm

Logic C2 cradle – duel height
45/60mm

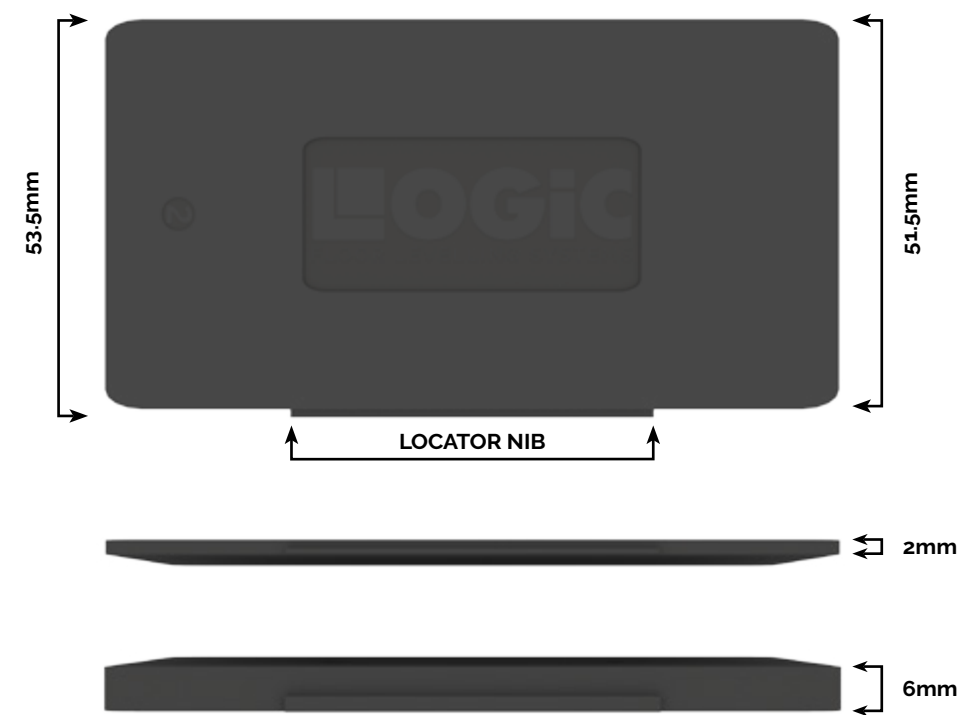




LOGIC CRADLE INJECTION MOULDED PACKERS

Injection-moulded polypropylene; **2mm**
and **6mm** thickness.

Logic Floor Levelling Systems are suitable for use with structural floorboards (minimum thickness 20mm) and flooring grade sheet materials (such as plywood and chipboard with a minimum thickness of 18mm).



PERFORMANCE TESTS FOR LOGIC SPORTS CRADLES

BS EN 14904: 2006 this new harmonised European standard has superseded the old British Standard BS 7044 Part 4: 1991, with more demanding

performance criteria. **Logic** cradles comply with the highest category for Area Elastic floors: Type A4. Detailed test results on request.

	JUNCKERS	BOEN ARENAFLEX
Shock Absorption	✓ A4	✓ A4
Friction	✓ A4	✓ A4
Vertical Deformation	✓ A4	✓ A4
Basketball Rebound	✓ A4	✓ A4





PERFORMANCE TESTS FOR LOGIC ACOUSTIC CRADLES

Logic Floor Levelling Systems contribute significantly to the reduction of airborne and impact sound through party floors. Used with the appropriate floor, wall and ceiling construction, Logic systems comply with the requirements of Document E of Building Regulation.

Tests carried out by the Building Research Establishment (BRE) indicate that when installed with 22mm structural floor boards the system achieves an improvement in impact sound insulation on a standard heavyweight floor of 24db (unloaded) and 20db (loaded), in accordance with BS EN ISO 140-8.

PRODUCT	JUNCKERS	BOEN ARENAFLEX	TARKETT	T+G CHIPBOARD
BATTEN CENTRES	411mm	367mm	420mm	400mm
CRADLE CENTRES				
36mm	450mm	450mm	450mm	450mm
48mm	600mm	600mm	600mm	600mm

Contact the Courtcraft team today and enquire about our numerous Floor Levelling Systems.



t. 01942 881500

e. squash@courtcraft.co.uk

w. courtcraft.co.uk

